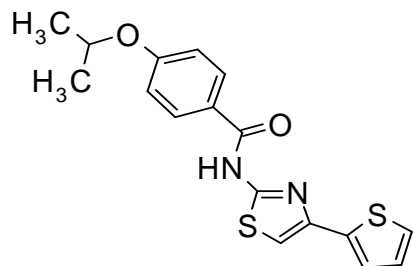


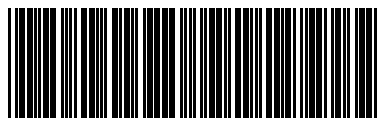
-.o.-Syntez Purity Report -.o.-

Agilent 1100 LC/MSD SL
Diodearray G1315B (DAD1A-215nm; DAD1B-254nm)
Mass Quad G1956B (MSD1-Pos, MSD2-Neg)
ELSD Altech 3300 (ADC1 A, ELSD)

Mobile Phase:A-H₂O+0.1%HCOOH;B-MeCN+0.1HCOOH
Separation column:
Rapid Resolutionn HT Cartige 4.6x30mm,
1.8-Micron, Zorbx SB-C18



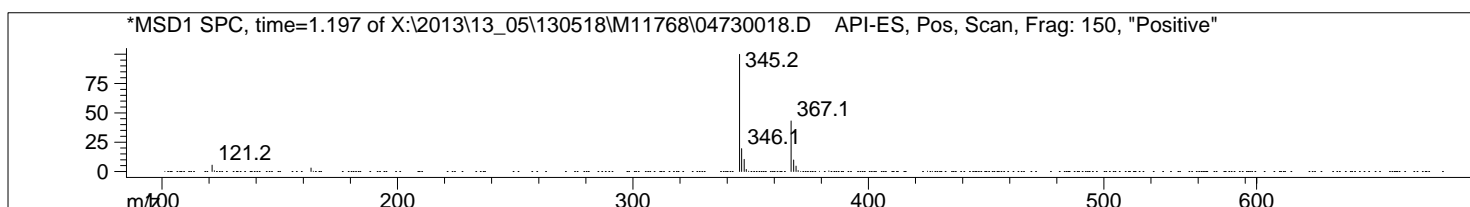
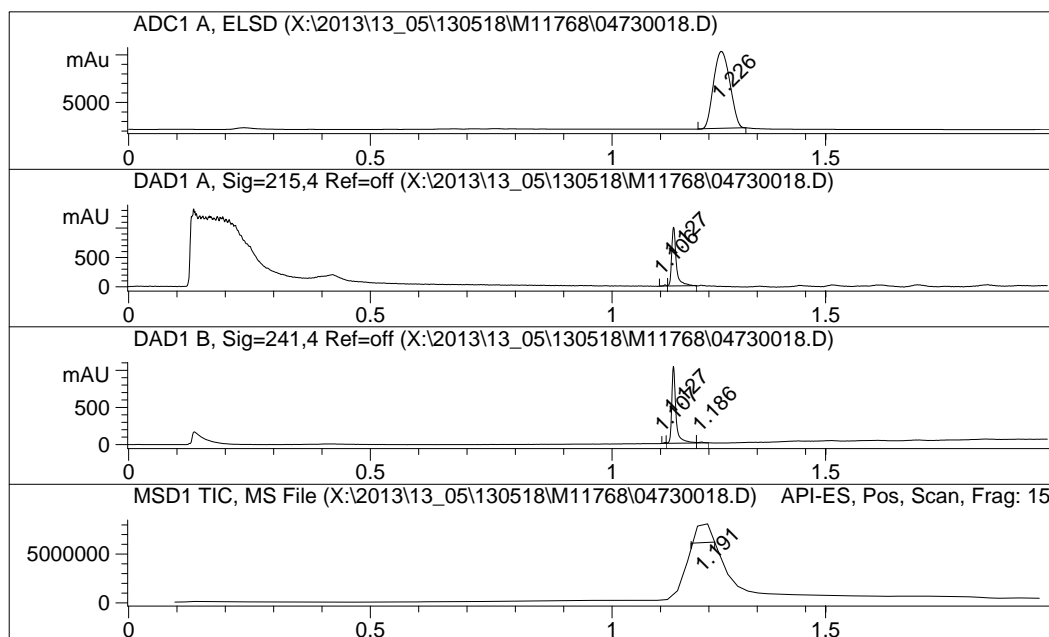
Mol.Weight: 344.46



F0473-0018

M11768

->



#	Signal	R.Time	Area %
1	ADC1 A, ELSD	1.226	100.000

#	Signal	R.Time	Area %
1	DAD1 A, Sig=215,4 Ref=off	1.106	1.095
2		1.127	98.905

#	Signal	R.Time	Area %
1	DAD1 B, Sig=241,4 Ref=off	1.107	0.697
2		1.127	97.841
3		1.186	1.462

#	Signal	R.Time	Area %
1	MSD1 TIC, MS File	1.191	100.000